

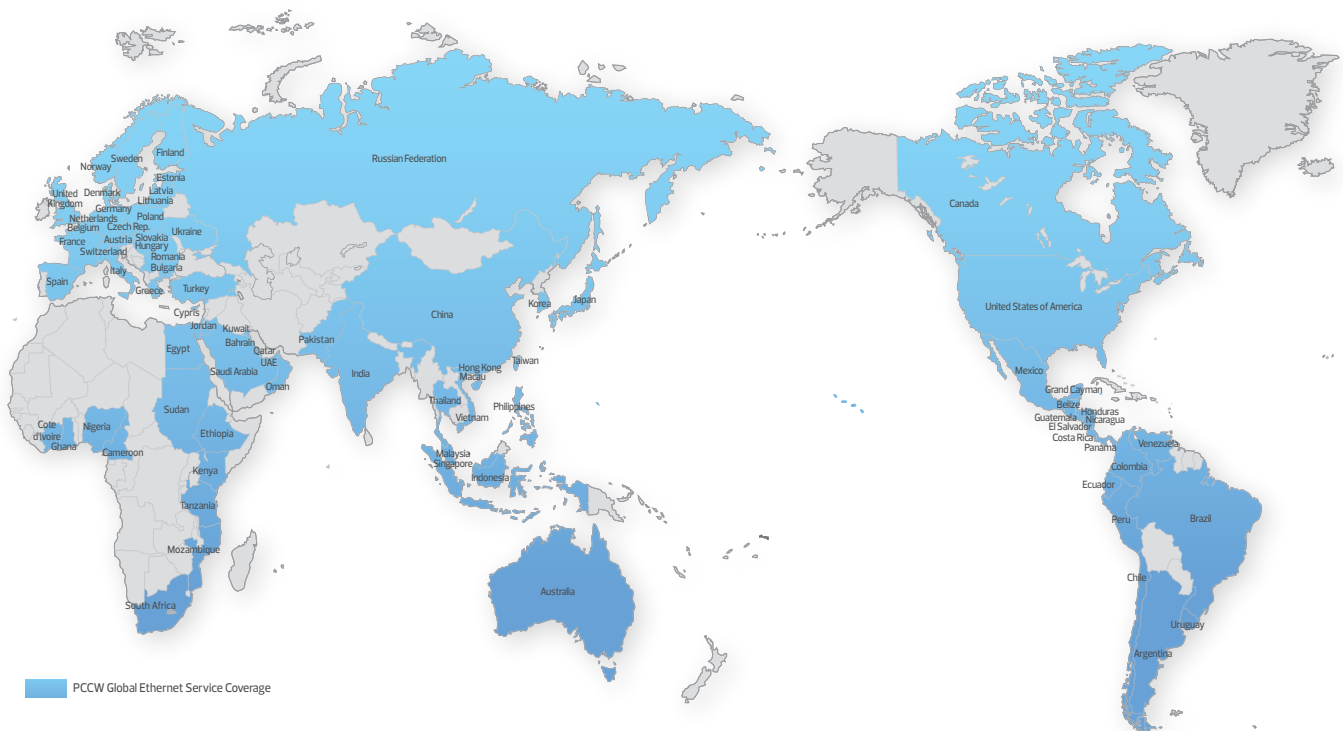
# Global Ethernet Solutions

## Switched and Dedicated Ethernet Services

PCCW Global's Ethernet solutions combine the reliability and ubiquity of Ethernet with Next Generation global transport technology. Offering point-to-point (E-LINE), point to multipoint (E-TREE) and multipoint-to-multipoint (E-LAN) services, PCCW Global Ethernet solutions enable the extension of LAN infrastructure for WAN connectivity with rates starting at 2Mbps ranging up to 10Gbps.

Our Ethernet solutions are available in major cities in over 70 countries in the world.

### Network coverage



### Key benefits to your business

- Variable bandwidth enabling you to fine-tune your network needs at each location
- No protocol conversion required ensuring interoperability between LAN, MAN and WAN
- Easier installation and management allow for rapid provisioning compared to other platforms
- Delivered directly to you via CAT5e wiring or fiber
- Scalable for long term network evolution connectivity

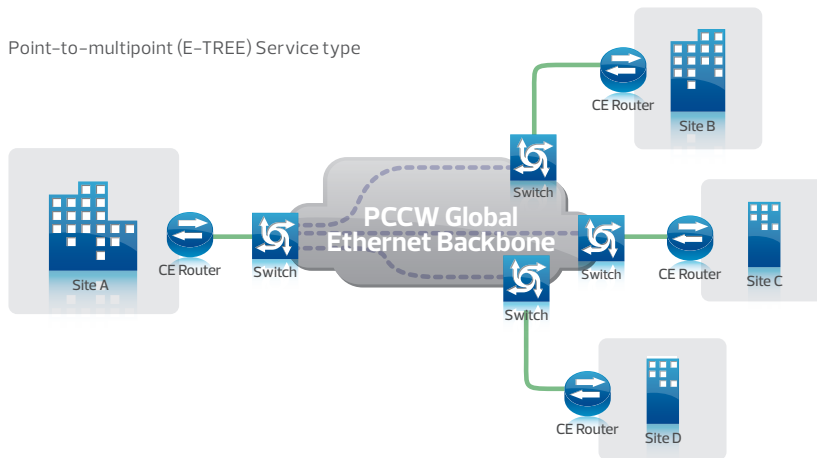


## Network diagram

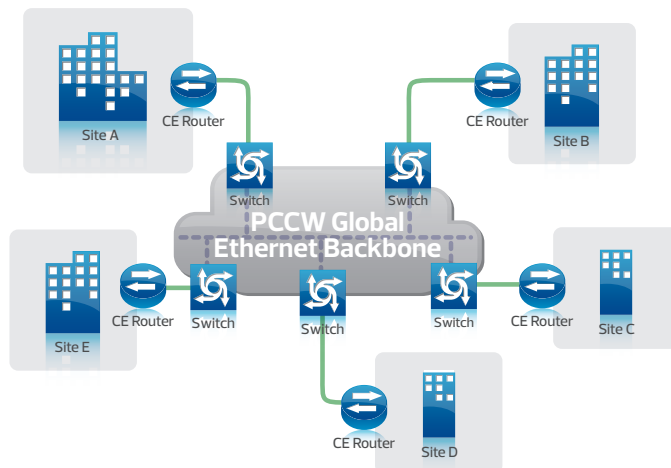
Point-to-point (E-Line) Service type



Point-to-multipoint (E-TREE) Service type



Multipoint-to-multipoint (E-LAN) Service type



- Ethernet Access Circuit
- - - PCCW Global Ethernet Backbone

## Specifications

	Switched Ethernet	Dedicated Ethernet
Architecture	EoMPLS	Sonet, SDH, DWDM
Throughput	2Mbps – 1 Gbps	2Mbps – 10Gbps
Network Management	Fast or Gig Ethernet	Fast or Gig Ethernet
Network Options	Long-haul and metro configurations	Long-haul and metro configurations
Availability	Available at most locations	Available at most locations

## Features\*

- Highly scalable and variable transport speeds from 2Mbps up to 10Gbps
- Switched and Dedicated Ethernet available in fixed bandwidth
- Dedicated Ethernet over SDH
- Dedicated Ethernet over DWDM (LAN-Phy)
- Point-to-point service (E-LINE)
- Point-to-multipoint service (E-TREE)
- Multipoint-to-multipoint service (E-LAN)
- Resilient transport services for high reliability
- Standards-based IEEE Ethernet service for Layer 2 transport
- Protocol transparent
- 802.1Q VLAN and 802.1 QinQ tunneling supported
- Jumbo MTU support from 1500 to 9000

\*Not all features are available in all markets; please contact PCCW Global to determine availability

Employing approximately 19,300 staff worldwide, PCCW Limited is the holding company of HKT Group Holdings Limited (HKT) and serves customers as Hong Kong's premier telecommunications provider and a world-class player in Information & Communications Technologies. Operating as a wholly-owned subsidiary of HKT, PCCW Global provides integrated global communications solutions, runs a fully-meshed IP, fiber and satellite network and serves the voice, data and multimedia needs of enterprises worldwide, plus the operational requirements of service providers.

[www.pccwglobal.com](http://www.pccwglobal.com)

## Contact us

**Americas**  
**Herndon, VA, USA**  
Tel +1703 6211600  
[americas@pccwglobal.com](mailto:americas@pccwglobal.com)

**Asia Pacific**  
**Hong Kong**  
Tel +852 2888 6688  
[asiapacific@pccwglobal.com](mailto:asiapacific@pccwglobal.com)

**Europe**  
**Paris, France**  
Tel +33 (0)142 66 08 35  
[europa@pccwglobal.com](mailto:europa@pccwglobal.com)

**Middle East & Africa**  
**Dubai, UAE**  
Tel +971 (0) 4 446 7480  
[mena@pccwglobal.com](mailto:mena@pccwglobal.com)  
[africa@pccwglobal.com](mailto:africa@pccwglobal.com)